



Luketekelo Foundation  
TRANSFORMING LIVES

# IMPACT REPORT 2022-2024



FAITH FAMILY  
FOUNDATION

## A MESSAGE FROM OUR FOUNDER

Dear Friends,

Our foundation's growth enables us to increase our impact. Luketekelo, means faith in english. It is our faith in Jesus Christ that guides our work. We trust in his power, intelligence, provisions, and love impacting our work and lives.

Jane Goodall's words come to mind: "You cannot get through a single day without having faith that someone's life will be impacted in the world around you."

Our programs are centered in Zambia, where our initiatives safeguard children's rights, safety, dignity, and development by providing holistic care and protection to vulnerable children.

The belief that **"It is easier to build strong children than to repair broken adults"** infuses everything we do.

Your support creates long-term impact by funding education, and creating safe spaces. Because of you, lives are transformed and generational impact is created.

Thank you to all involved in our journey.

Sincerely,

Memory Grace Hector  
Founder/CVO.

## IMPACT SNAPSHOT

65

Children Supported with food  
supplies and school supplies

24

Women, Youth and Men  
empowered through  
short -term employment.

### Our Challenges.

Just completed building a safe home that now serves as a school for orphans and vulnerable children in the village of Mwampila in Chibombo district of Zambia . With an estimated population of 5,000 children and youth in this community which 90% of this number is out of school due to severe challenges including high poverty levels, increased school dropout rates, No schools nearby for children to attend, increased pregnancy levels, high levels of unemployment, drug abuse amongst the youths, high illiteracy levels and lack of mentorship resources, leading to disillusionment.

# PROJECTS

# DETAILS

# OUTCOME

## Construction of the safe home/School

- Our goal is to provide education and shelter for 65 orphans and vulnerable children.

- Completed Safe/School.
- Hired 7 Staff members,
- Addition of 255 children eager to learn.
- 320 Children being Served

## Agriculture/Farm house

- Our goal was to provide a safe place the farmer Manager,
- Becoming self-sustainable organization.

- We completed the farm house
- Planted 5 acres of Corn,
- Growing a garden of varieties vegetables to feeding our Children

## Clean water and sanitation

- Providing Clean and safe water to our Children and Staffs.
- Reducing the spread of disease and improve sanitation.

- We dug 50m well drilling.
- We built 6 pit latrine toilets for students and Staffs.

## Fencing the Property

- Providing security and safeguard the lives of the Children.
- Protecting the Crops

- Fenced all Property with game wire fence.
- Installed the Gate.

## Purchase of Sedan ( Toyota)

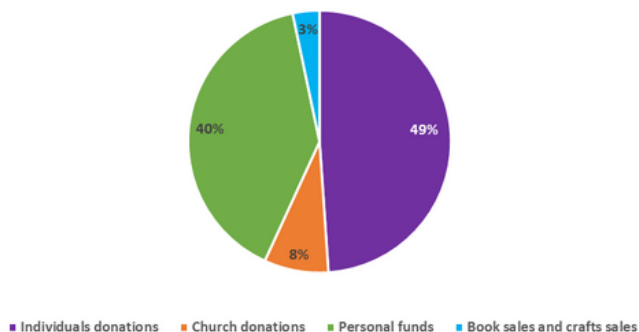
- For travel efficiency during Foundation projects.

- We have Transport do minimum projects.

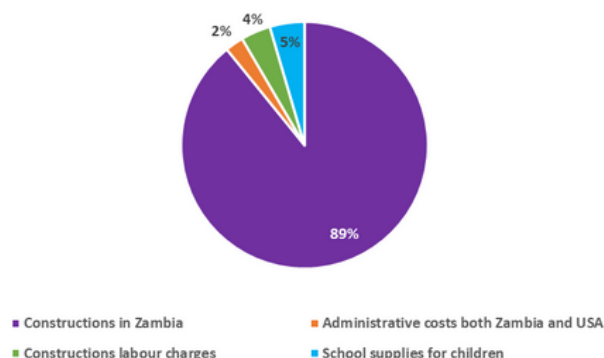
Luketekelo (Faith) Family Foundation has historically relied on individual donations and personal funds initiatives as its main sources of income. These funding streams have been vital in maintaining the organization and supporting its programs and initiatives. The resources provided by founder Memory Grace Hector ,friends ,family, Lutheran Vasa church ,Bethesda church and New creations have been essential for sustaining the organization. Additionally, a 501c3 nonprofit organization has been registered in America to raise funds for projects in Zambia. Moving forward, the foundation will continue to seek support from individuals and churches to ensure the sustainability, continuity, and effectiveness of its programs.

The foundation appreciates the contributions from individuals and churches to its financial resources. Their support aids the foundation's mission to create positive change and impact children's lives. The organization remains accountable and transparent in managing its finances and is committed to the efficient use of all funds entrusted to it.

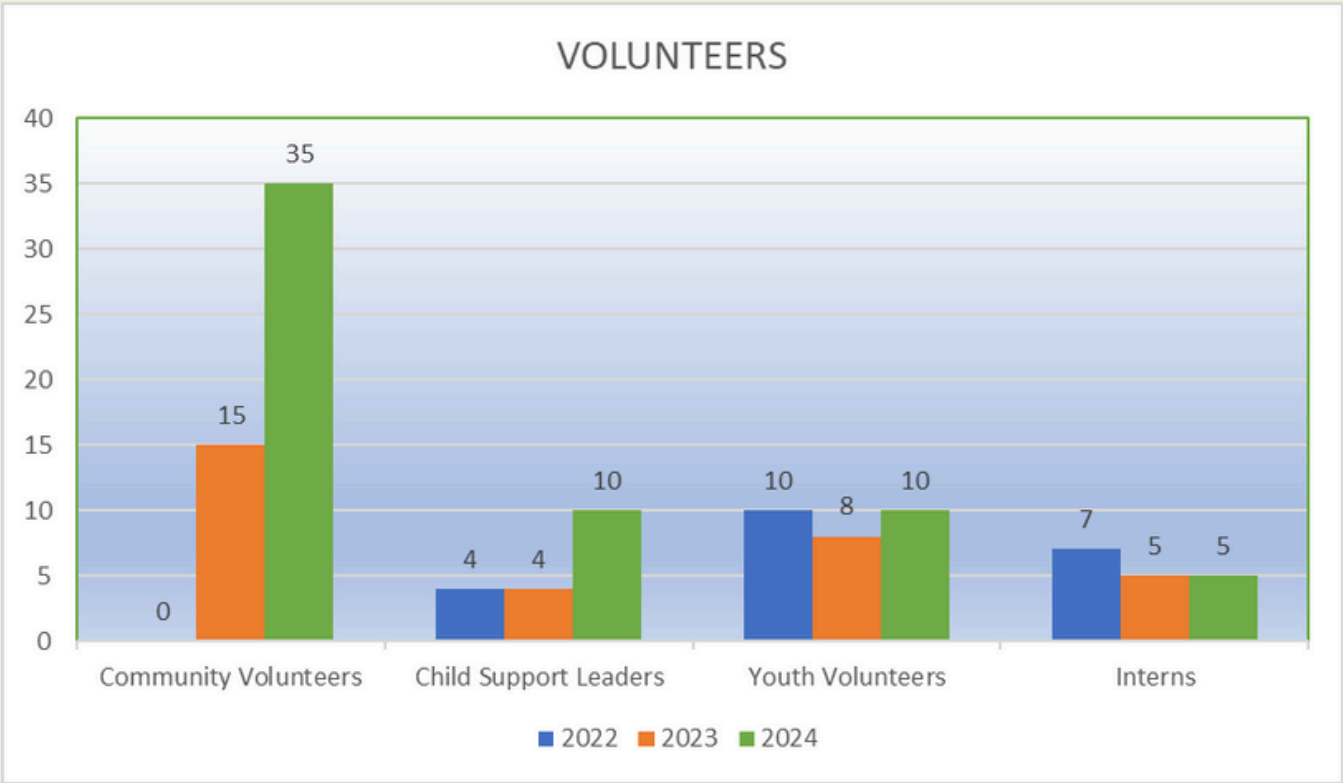
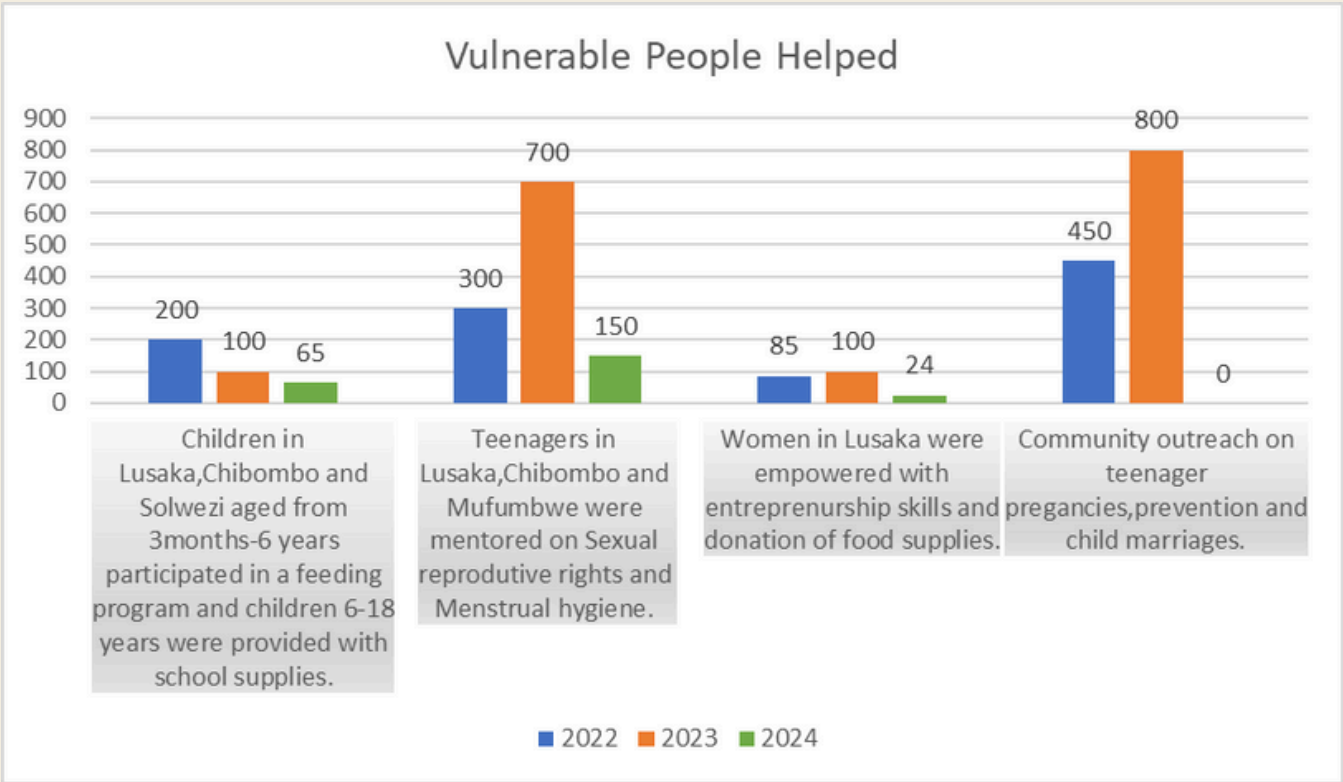
**TOTAL FUNDS RAISED : USD 75,777.95**



**TOTAL EXPENSES: USD 75,777.95**



Our primary goal is to transform the lives of children holistically with the love of Christ. Our vision is that the children of our home will become committed Christians who take responsibility for their lives, their communities and their world. And safeguarding the lives of children is the cornerstone of a society, and transformation must begin with them.













## **Our Immediate and Urgent Needs 2025.**

As an organization, we took a bold step towards creating a brighter future by purchasing two (2) farmlands of 465 acres in Mufumbwe and 17 acres of land in Chibombo, We are currently supporting 65 children; however, an additional 255 children have joined us, eager to learn. Although this presents a challenge due to limited classroom capacity and teachers, our organization is committed to providing education and shelter to all. Our first building is being utilized as a home and classrooms. The building cannot accommodate all these children, and we are finding it difficult to turn any child away. Education is the most powerful weapon for changing the world. We are seeking financial assistance to construct the following;

- Classrooms,
- Dining hall,
- Library,
- Piggery facilities,
- Chicken run,
- Grain storage
- Bunker beds/mattress and beddings and other utilities.
- Salaries for all workers.

The parents of children who attend our school have agreed to pay with livestock and crops to help cover educational costs. The plan is to keep these livestock and them multiply; However, we lack storage facilities. Community members are actively involved in the growth and sustainability of Luketekelo Family Foundation. They are ready to help by molding and burning bricks to reduce building costs, creating a healthier learning environment for the children.

**TOTAL ESTIMATE = \$116,312**

**N/B: All expenditure items may be completed between 6 to 12 months.**

**We do appreciate your generous support and prayers.**

## GRATITUDE

### WE COULDN'T HAVE DONE IT WITHOUT YOUR GENEROUS SUPPORT.

Thank you to our dedicated team, individual donors, sponsors, and stakeholders in Zambia and America for your support throughout 2022-2024. Together, we advanced ambitious projects that have significantly impacted children's lives and sustainable development in the rural community we serve.

While celebrating our 2022-24 accomplishments, we acknowledge upcoming challenges. We remain committed to transforming children's lives and advancing our projects.

We look forward to continuing this journey of faith, hope, and transformation for the children entrusted to us.



To support this ministry financially, see the details below:

#### CHEQUE:

Please make cheques to: **Faith Family Foundation**. Mailing Address: 30783 County 7 Blvd Welch, MN 55089.

#### ONLINE:

Please select a fund or program from the options listed on the website on the **donation page**.

Please include your name, address and contact details in the message box, to ensure a tax receipt can sent to the correct individual.

**W:** [www.faithfamilyfoundation.us](http://www.faithfamilyfoundation.us)  
[www.luketekelo.org](http://www.luketekelo.org)

**E:** [faithfamilyfoundation@yahoo.com](mailto:faithfamilyfoundation@yahoo.com)  
[/info@luketekelo.org](mailto:/info@luketekelo.org)

**A:** 30783 County 7 Blvd  
Welch, MN 55089.

**P:** +13479879304